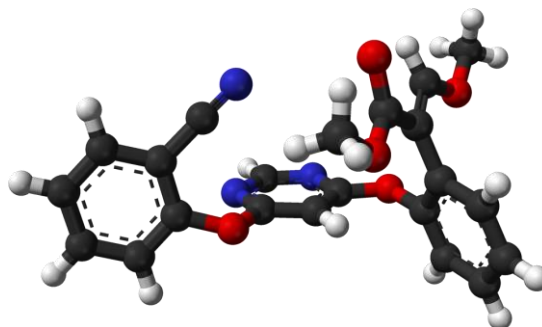


CAUTION
KEEP OUT OF REACH OF CHILDREN
READ SAFETY DIRECTIONS BEFORE OPENING OR USING



Azoxy 250 Fungicide

ACTIVE CONSTITUENT: 250 g/L AZOXYSTROBIN

GROUP

11

FUNGICIDE

**For the Control of Various Diseases of Grapes, Potatoes, Tomatoes,
Cucurbits, Avocados, Mangoes, Passionfruit and Poppies as per
the Direction for Use**

**IMPORTANT: READ THIS LEAFLET BEFORE OPENING OR
USING THIS PRODUCT**

APVMA Approval No.: 66927/54706



Crop Culture Pty Ltd
ACN: 142 860 473
Unit 9, 57-59 Horne Street
Sunbury Vic 3429
Ph: 0413 587 682
Fax: 03 8888 9992
www.cropculture.com.au

DIRECTIONS FOR USE**Restraint**

DO NOT apply by air, except on potatoes

TREE AND VINE CROPS				
Rate				Critical Comments
In the following table Tree and Vine Crops, all rates given are for dilute spraying. For concentrate spraying, refer to the Application section.				For all uses in the table Tree and Vine Crops: apply by dilute or concentrate spraying equipment. Apply the same total amount of product to the target crop whether applying this product by dilute or concentrate spraying methods. When applying Azoxy 250 Fungicide through low volume application equipment, DO NOT use a concentrate factor greater than 4X. In these cases adequate coverage of all plant surfaces is still required to achieve control of diseases.
Crop	Disease	Rate / 100 L	WHP	Critical Comments
Avocados	Stem End Rot, Anthracnose	80 mL	7 days	Apply Azoxy 250 Fungicide in a preventative fungicide program containing fungicides from a different chemical group. For best results commence the disease control program with an approved fungicide from an alternative chemical group, then apply 1 application of Azoxy 250 Fungicide during early fruit set. Follow with applications of an approved fungicide from a different chemical group. Apply 2 final applications of Azoxy 250 Fungicide at 14 to 28 day intervals with the final spray applied 7 days prior to harvest Ensure thorough spray coverage. Resistance Management Disease control may be reduced if strains of pathogens less sensitive to Azoxy 250 Fungicide develop. DO NOT use Azoxy 250 Fungicide curatively. If consecutive applications of Azoxy 250 Fungicide are used they must be followed by at least the same number of applications of fungicide(s) from a different group(s) before Azoxy 250 Fungicide is used again in that crop in the current or following season. Apply a maximum of 3 applications of Azoxy 250 Fungicide per season. DO NOT apply more than 2 consecutive applications of Azoxy 250 Fungicide. DO NOT start the disease control program with Azoxy 250 Fungicide.

Crop	Disease	Rate / 100 L	WHP	Critical Comments
Grapes table, wine, dried	Powdery Mildew (<i>Uncinular necator</i>), Downy Mildew (<i>Plasmopara viticola</i>), Botrytis Bunch Rot † (<i>Botrytis cinerea</i>)	75 - 100 mL	14 days	<p>Application Method and Rate Apply in a sufficient volume of water to achieve thorough coverage of all foliage and fruit. The volume of water required to achieve this will depend on the stage of vine growth and vigour. Ensure thorough coverage. Adjust spray nozzles to direct spray droplets to the canopy present. Apply the higher rate of application in the following circumstances: 1. Where humid conditions favour Powdery Mildew infection, particularly on susceptible varieties. 2. At the start of the season when there has been a heavy carry over of Powdery Mildew infection (flag shoots are present).</p> <p>Spray Timing and Interval Apply 2 or 3 consecutive applications at 10 to 16 day intervals at any time between early shoot growth and 14 days before harvest. Use the recommended shorter interval during periods when climatic conditions are favourable for disease infection.</p> <p>† Botrytis Bunch Rot Azoxy 250 Fungicide must not be used alone for Botrytis control at critical times such as 80 to 100% capfall and preharvest. It must be tank mixed with or substituted by a specific botryticide at these critical times. When Azoxy 250 Fungicide is used in a seasonal spray programme it will provide control of Botrytis additional to that of specific botryticides such as Bravo®.</p> <p>Resistance Management Disease control may be reduced if strains of pathogens less sensitive to Azoxy 250 Fungicide develop. DO NOT use Azoxy 250 Fungicide curatively. As a precaution, DO NOT apply more than a total of 3 applications of Azoxy 250 Fungicide per crop in 1 season. If consecutive applications of Azoxy 250 Fungicide are used they must be followed by at least the same number of applications of fungicide(s) from a different group(s) before Azoxy 250 Fungicide is used again in that crop in the current or following season. DO NOT use Azoxy 250 Fungicide for disease control in grapevine nurseries.</p>

Crop	Disease	Rate / 100 L	WHP	Critical Comments
Mangoes	Stem End Rot, Anthracnose	80 mL	3 days	<p>Apply Azoxy 250 Fungicide in a preventative fungicide program containing fungicides from a different chemical group.</p> <p>For best results apply 1 to 2 applications of Azoxy 250 Fungicide at flowering and early fruit set, at no less than 14-day intervals. Follow with applications of an approved fungicide from a different chemical group. Further applications of Azoxy 250 Fungicide may be applied at 21 days and 3 to 7 days prior to harvest. Ensure thorough spray coverage.</p> <p>Resistance Management Disease control may be reduced if strains of pathogens less sensitive to Azoxy 250 Fungicide develop. DO NOT use Azoxy 250 Fungicide curatively. If consecutive applications of Azoxy 250 Fungicide are used they must be followed by at least the same number of applications of fungicide(s) from a different group(s) before Azoxy 250 Fungicide is used again in that crop in the current or following season. Apply a maximum of 3 applications of Azoxy 250 Fungicide per season. DO NOT apply more than 2 consecutive applications of Azoxy 250 Fungicide. DO NOT start the disease control program with Azoxy 250 Fungicide.</p>
Passion-fruit	Alternaria, Cladosporium	80 mL	1 day	<p>Apply Azoxy 250 Fungicide in a preventative fungicide program containing fungicides from a different chemical group.</p> <p>For best results apply 2 to 3 applications of Azoxy 250 Fungicide at 14-day intervals over flowering. Follow with applications of an approved fungicide from a different chemical group. Apply a further 1 to 2 applications of Azoxy 250 Fungicide finishing 1 day prior to harvest. Ensure thorough spray coverage.</p> <p>Resistance Management Disease control may be reduced if strains of pathogens less sensitive to Azoxy 250 Fungicide develop. DO NOT use Azoxy 250 Fungicide curatively. DO NOT apply more than 1/3 of the total number of fungicide applications. For example, if the total number of fungicides applied to the crop is 9, DO NOT apply more than 3 applications of Azoxy 250 Fungicide. DO NOT exceed 5 applications of Azoxy 250 Fungicide per crop. DO NOT apply more than 2 consecutive applications of Azoxy 250 Fungicide. DO NOT start the disease control program with Azoxy 250 Fungicide.</p>

OTHER CROPS				
Crop	Disease	Rate / 100 L	WHP	Critical Comments
Cucurbits	Powdery Mildew (<i>Sphaerotheca fuliginea</i>), Downy Mildew (<i>Pseudoperonospora cubensis</i>)	80 to 120mL	1 day	<p>Apply the higher rate when climatic conditions favour Powdery or Downy Mildew infection and in crops with large canopies.</p> <p>Application Apply in a sufficient volume of water to achieve thorough coverage of all foliage. The volume of water required to achieve this will depend on the stage of growth of the cucurbits. For dilute spraying (mL/100 L), an application volume of 300 L/ha is suggested where sprays are banded in the early part of the season, increasing to 1000 L/ha as a broadcast spray in a vigorous crop at full canopy.</p> <p>Spray Interval Consecutive applications should be applied at 7 to 14 day intervals, commencing soon after transplanting and continuing up to fruit maturity. Use the recommended shorter application interval in the following circumstances: 1. Under humid weather conditions which are favourable for Powdery Mildew, Downy Mildew or Gummy Stem Blight infection. 2. When there is rapid vegetative growth during the early part of the crop cycle.</p> <p>Resistance Management Disease control may be reduced if strains of pathogens less sensitive to Azoxy 250 Fungicide develop. Apply Azoxy 250 Fungicide in a protective spray program. DO NOT wait until disease levels have built up to make applications as this reduces the effectiveness of control and increases the risk of resistance development. As a precaution DO NOT apply more than 1/3 of the total fungicide sprays, up to a maximum of 4 sprays of Azoxy 250 Fungicide per crop. A maximum of 2 consecutive applications of Azoxy 250 Fungicide are to be applied. They must be preceded and followed by at least 2 applications of fungicide(s) from a different fungicide group(s) such as Bravo® to control Downy Mildew and Gummy Stem Blight and Nimrod® to control Powdery Mildew, before Azoxy 250 Fungicide is used again in that crop. Where crops are grown successively alternation should continue between crops.</p>
	Gummy Stem Blight (<i>Didymella bryoniae</i>)	120 mL		
Poppies	Downy Mildew	75 mL	6 weeks	<p>Apply Azoxy 250 Fungicide in a preventative fungicide program containing fungicides from a different chemical group. Apply Azoxy 250 Fungicide preventatively before disease symptoms appear. Ensure thorough spray coverage.</p> <p>Resistance Management Disease control may be reduced if strains of pathogens less sensitive to Azoxy 250 Fungicide develop. DO NOT use Azoxy 250 Fungicide curatively. Apply a maximum of 2 applications of Azoxy 250 Fungicide per crop.</p>

Crop	Disease	Rate	WHP	Critical Comments
Potatoes	Early Blight (Target Spot) (<i>Alternaria solani</i>)	300 to 400 mL/ha		<p>Apply the higher rates when climatic conditions favour Early Blight or Late Blight infection and in crops with large canopies.</p> <p>Application Azoxy 250 Fungicide may be applied by ground or aerial application equipment in potatoes. Aerial application may be used only for Early Blight (Target Spot) control. Apply in a sufficient volume of water to achieve thorough coverage of all foliage. The volume of water required to achieve this will depend on the stage of growth of the potatoes.</p> <p>Ground Application: A volume of 200 to 300 L/ha is suggested at the start of the season, increasing to 500 to 600 L/ha in a vigorous crop at full canopy.</p> <p>Aerial Application (Early Blight only): A volume of 30 to 40 L/ha is recommended.</p> <p>Spray Interval Consecutive applications should be applied at 7 to 14 day intervals at any time between early shoot growth and 14 days before harvest. Use the recommended shorter application interval in the following circumstances:</p> <ol style="list-style-type: none"> 1. Under humid weather conditions which are favourable for Early or Late Blight infection. 2. When there is rapid vegetative growth during the early part of the crop cycle. 3. At the first sign of Late Blight infection. <p>Resistance Management Disease control may be reduced if strains of pathogens less sensitive to Azoxy 250 Fungicide develop. Apply Azoxy 250 Fungicide in a protective spray program. DO NOT wait until disease levels have built up to make applications as this reduces the effectiveness of control and increases the risk of resistance development.</p> <p>As a precaution, DO NOT apply more than 1/3 of the total fungicide sprays per crop as Azoxy 250 Fungicide. A maximum of 3 consecutive applications of Azoxy 250 Fungicide are to be applied. They must be preceded and followed by at least 3 applications of fungicide(s) from a different fungicide group(s) such as Bravo, before Azoxy 250 Fungicide is used again in that crop.</p> <p>Where Late Blight infection has occurred it is recommended that single sprays of Azoxy 250 Fungicide be alternated with 2 sprays of Bravo or a fungicide(s) from another group(s). Where crops are grown successively alternation should continue between crops.</p>
	Late Blight (<i>Phytophthora infestans</i>)	500 to 600 mL/ha		
	<p>Soil borne:</p> <p>Black Scurf (<i>Rhizoctonia solani</i>)</p> <p>Silver Scurf* (<i>Helminthosporium solani</i>)</p> <p>*Suppression only</p>	5 to 10 mL per 100 m of row		

Crop	Disease	Rate	WHP	Critical Comments
				additional moisture. DO NOT apply Azoxy 250 Fungicide if planting in hot, sandy soils as bacterial rots may be aggravated. DO NOT mix with any other products when applying as an in-furrow spray.

Crop	Disease	Rate / 100 L	WHP	Critical Comments
Tomatoes except greenhouse	Early Blight (Target Spot) (<i>Alternaria solani</i>)	400 mL/ha or 40 mL/100 L	1 day	<p>Application Apply in a sufficient volume of water to achieve thorough coverage of all foliage. The volume of water required to achieve this will depend on the stage of growth of the tomatoes and the method of trellising which influences canopy volume. In the case of dilute spraying (mL/100 L) apply in the range of 400 to 500 L/ha after transplanting and increase to 800 to 1000 L/ha at full canopy. In the case of fully trellised tomatoes at full canopy, application volumes should be increased to 1500 L/ha to achieve these results with high volume spraying. For Late Blight and Sclerotinia control use the higher rates when climatic conditions are humid and mild, which favours disease infection.</p> <p>Spray Interval Consecutive applications should be applied at 7 to 14 day intervals commencing soon after transplanting and continuing up to fruit maturity. Use the recommended shorter application interval in the following circumstances: 1. Under humid weather conditions which are favourable for disease infection. 2. When there is rapid vegetative growth during the early part of the crop cycle.</p> <p>Resistance Management Disease control may be reduced if strains of pathogens less sensitive to Azoxy 250 Fungicide develop. Apply Azoxy 250 Fungicide in a protective spray program. DO NOT wait until disease levels have built up to make applications as this reduces the effectiveness of control and increases the risk of resistance development. As a precaution, DO NOT apply more than 1/3 of the total fungicide sprays per crop as Azoxy 250 Fungicide. A maximum of 3 consecutive applications of Azoxy 250 Fungicide are to be applied. They must be preceded and followed by at least 3 applications of fungicide(s) from a different fungicide group(s) such as Bravo, before Azoxy 250 Fungicide is used again in that crop. Where Late Blight infection has occurred it is recommended that single sprays of Azoxy 250 Fungicide be alternated with 2 sprays of Bravo or a fungicide(s) from another group(s). Where crops are grown successively alternation should continue between crops.</p>
	Late Blight (<i>Phytophthora infestans</i>), Sclerotinia (<i>Sclerotinia minor</i>)	500 mL/ha or 50 mL/100 L		

**NOT TO BE USED FOR ANY PURPOSE, OR IN ANY MANNER CONTRARY TO THIS LABEL
UNLESS AUTHORISED UNDER APPROPRIATE LEGISLATION**

WITHHOLDING PERIODS

Avocados:	DO NOT HARVEST FOR 7 DAYS AFTER APPLICATION
Cucurbits, Passionfruit, Tomatoes:	DO NOT HARVEST FOR 1 DAY AFTER APPLICATION
Grapes:	DO NOT HARVEST FOR 14 DAYS AFTER APPLICATION
Mangoes:	DO NOT HARVEST FOR 3 DAYS AFTER APPLICATION
Poppies:	DO NOT HARVEST FOR 6 WEEKS AFTER APPLICATION
Potatoes:	NOT REQUIRED WHEN USED AS DIRECTED

EXPORT OF TREATED PRODUCE**Grapes**

While Maximum Residue Limits (MRLs) have been set in many major wine export destinations, some export destinations have not finalised MRL applications. For further information regarding export tolerances please contact your winery, Crop Culture Pty Ltd representative or the Australian Wine Research Institute.

Other Crops

While Maximum Residue Limits (MRLs) have been set in many major export destination, it should be noted that MRLs or import tolerances may not be established in all export destinations. For further information regarding export tolerances please contact your export organisation or Crop Culture Pty Ltd representative.

GENERAL INSTRUCTIONS**Application**

DO NOT use concentration factors exceeding 4X when applying through low volume application equipment, except when applying Azoxy 250 Fungicide by air. In these cases adequate coverage of all plant surfaces is still required to achieve control of diseases.

Tree Crops and Vines Dilute spraying: Use a sprayer designed to apply high volumes of water up to the point of run-off and matched to the crop being sprayed. Set up and operate the sprayer to achieve even coverage throughout the crop canopy. Apply sufficient water to cover the crop to the point of run-off. Avoid excessive run-off. The required water volume may be determined by applying different test volumes, using different settings on the sprayer, from industry guidelines or expert advice. Add the amount of product specified in the Direction for Use table for each 100 L of water. Spray to the point of run-off. The required dilute spray volume will change and the sprayer set up and operation may also need to be changed, as the crop grows.

Concentrate spraying: Use a sprayer designed and set up for concentrate spraying (that is a sprayer which applies water volumes less than those required to reach the point of run-off) and matched to the crop being sprayed. Set up and operate the sprayer to achieve even coverage throughout the crop canopy using your chosen water volume. Determine an appropriate dilute spray volume (see Dilute spraying above) for the crop canopy. This is needed to calculate the concentrate mixing rate. The mixing rate for concentrate spraying can then be calculated in the following way:

Example only

1. Dilute spray volume as determined above: for example, 1000 L/ha
2. Your chosen concentrate spray volume: for example, 500 L/ha
3. The concentration factor in this example is: 2X (i.e. $1000 \text{ L} \div 500 \text{ L} = 2$)
4. If the dilute label rate is 80 mL/100 L, then the concentrate rate becomes 2×80 , that is 160 mL/100 L of concentrate spray.

The chosen spray volume, amount of product per 100 L of water, and the sprayer set up and operation may need to be changed as the crop grows. For further information on concentrate spraying, users are advised to consult relevant industry guidelines, undertake appropriate competency training and follow industry Best Practices.

Mixing

Half-fill the spray tank with clean water and start agitation. Shake the closed Azoxy 250 Fungicide container. Whilst filling the remainder of the spray tank add the required amount of Azoxy 250 Fungicide, adding any tank mix products last. Maintain agitation until spraying is complete. DO NOT leave the spray mix in the sprayer overnight.

Compatibility/Tank Mixing

Azoxy 250 Fungicide may be mixed in the spray vat with any one of the following products: Ambush[®], Bravo[®], captan WG, copper hydroxide, Dominex[®] 100, Dipel[®] DF, Karate[®], Larvin[®] 375, Fortress[®] 500, Talstar[®] 80SC, Thiodan[®].

A mixture of Azoxy 250 Fungicide with more than 1 of these products or with any other product may be ineffective or may cause serious damage. The use of such a mixture is not recommended and would therefore be entirely at the user's risk.

If tank mixes are to be used observe all directions, precautions and limitations on all products to be used. As formulations of other manufacturer's products are beyond the control of Crop Culture Pty Ltd, and water quality varies with location, all mixtures should be tested prior to mixing commercial quantities.

Note: On some tomato varieties, tank mixtures of Azoxy 250 Fungicide and Lorsban[®] 500 EC or Nitofol[®] or Supracide[®] or Lebaycid[®] or Kelthane[®] MF have been found to be phytotoxic. DO NOT tank mix these products with Azoxy 250 Fungicide.

On some grape varieties, tank mixtures of Azoxy 250 Fungicide and Lorsban 500 EC have been found to be phytotoxic. DO NOT tank mix Azoxy 250 Fungicide with Lorsban 500 EC for use in grapes.

FUNGICIDE RESISTANCE WARNING

GROUP	11	FUNGICIDE
-------	----	-----------

Azoxy 250 Fungicide is a member of the Strobilurin and related products group of fungicides. For fungicide resistance management the product is a Group 11 fungicide. Some naturally occurring individual fungi resistant to the product and other Group 11 fungicides may exist through normal genetic variability in any fungal population. The resistant individuals can eventually dominate the fungal population if these fungicides are used repeatedly. These resistant fungi will not be controlled by this product or other Group 11 fungicides, thus resulting in a reduction in efficacy and possible yield loss.

Since the occurrence of resistant fungi is difficult to detect prior to use, Crop Culture Pty Ltd accepts no liability for any losses that may result from the failure of this product to control resistant fungi.

WARNING

Azoxy 250 Fungicide is extremely phytotoxic to certain apple varieties.

AVOID SPRAY DRIFT - Extreme care must be used to prevent injury to apple trees.

DO NOT spray Azoxy 250 Fungicide where spray drift may reach apple trees.

DO NOT spray when conditions favour drift beyond the area intended for application. Conditions that may contribute to drift include thermal inversions, excessive wind speed, certain sprayer nozzle/pressure combinations, small spray droplet size etc.

DO NOT use spray equipment that has been previously used to apply Azoxy 250 Fungicide to spray apple trees. Even trace amounts can cause unacceptable phytotoxicity.

PROTECTION OF WILDLIFE, FISH, CRUSTACEANS AND ENVIRONMENT

HIGHLY TOXIC TO AQUATIC LIFE.

DO NOT contaminate dams, waterways or drains with the chemical or used containers. DO NOT apply under weather conditions or from spraying equipment, which could be expected to cause spray drift on adjacent areas, particularly wetlands, water bodies or watercourses.

STORAGE AND DISPOSAL

Store in the closed, original container in a cool, well-ventilated area. DO NOT store for prolonged periods indirect sunlight. Triple or preferably pressure rinse containers before disposal. Add rinsings to the spray tank. DO NOT dispose of undiluted chemicals on-site. If recycling replace cap and return clean containers to recycler or designated collection point.

If not recycling, break, crush or puncture and deliver empty packaging for appropriate disposal to an approved waste management facility. If an approved waste management facility is not available, bury the empty packaging 500 mm below the surface in a disposal pit specifically marked and set up for this purpose clear of waterways, desirable vegetation and tree roots, in compliance with relevant Local, State or Territory government regulations. DO NOT burn empty containers or product.

SAFETY DIRECTIONS

Will irritate the eyes. Avoid contact with eyes. Wash hands after use. When opening the container and preparing product for use, wear cotton overalls buttoned to the neck and wrist (or equivalent clothing), elbow-length PVC gloves and goggles. After each day's use, wash gloves, goggles and contaminated clothing.

FIRST AID

If poisoning occurs contact a doctor or Poisons Information Centre. Telephone Australia 13 11 26.

SAFETY DATA SHEET

For further information, refer to the Safety Data Sheet (SDS), which can be obtained from your supplier or from the manufacturer's website - www.cropculture.com.au

CONDITIONS OF SALE

The use of Crop Culture Azoxy 250 Fungicide being beyond the control of the manufacturer, no warranty expressed or implied is given by Crop Culture Pty Ltd regarding its suitability, fitness or efficiency for any purpose for which it is used by the buyer, whether in accordance with the directions or not and Crop Culture Pty Ltd accepts with no responsibility for any consequences whatsoever resulting from the use of this product.

® - Registered Trademark

In a Transport Emergency Dial 000 Police or Fire Brigade